

Opening alternative economic and social outcomes through community land ownership in Scotland



Michael T. Bacon

Ph.D. Candidate, Constructed Environment
Urban and Environmental Planning
University of Virginia School of Architecture

AAG Annual Meeting
Washington, DC
5 April 2019

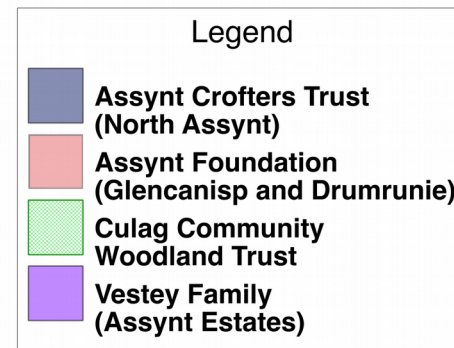
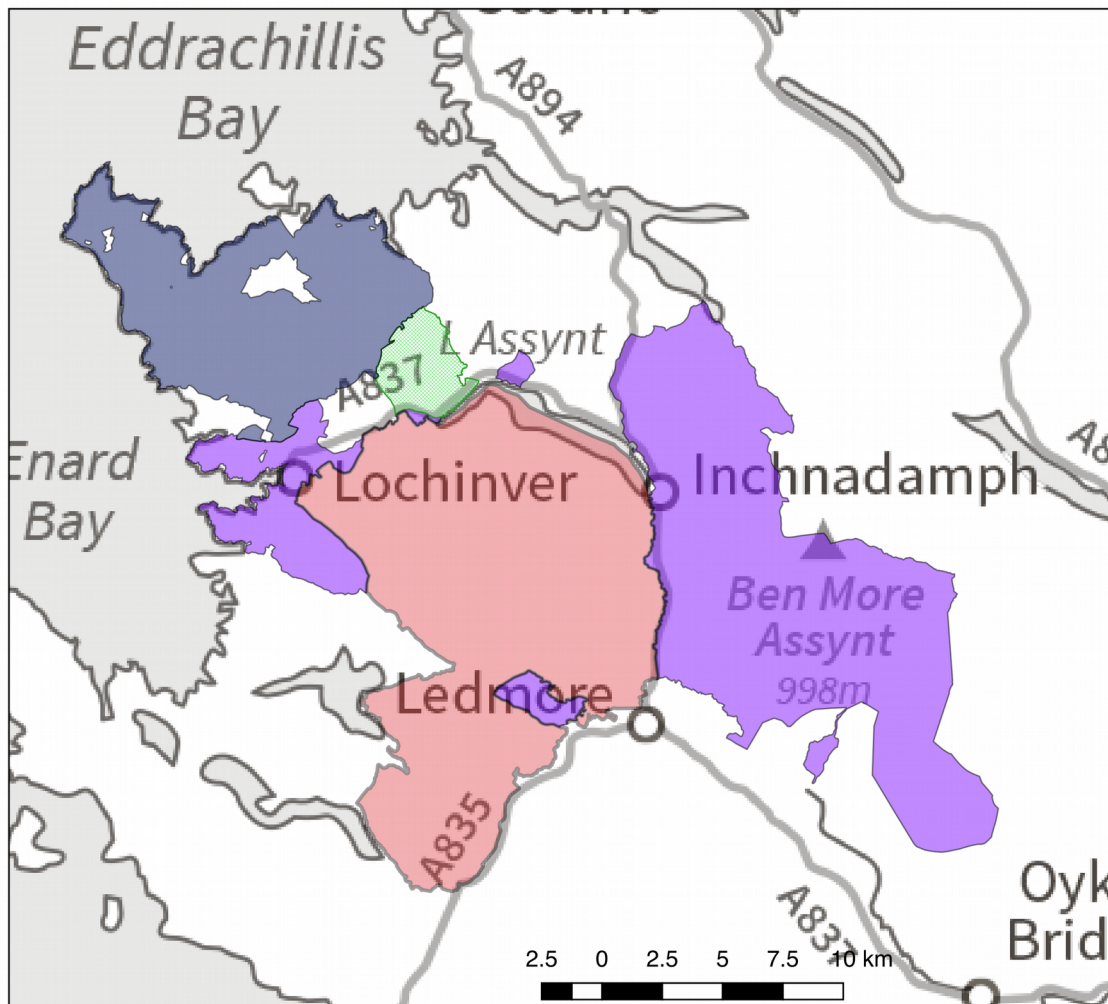


Technics of Community Ownership in Scotland



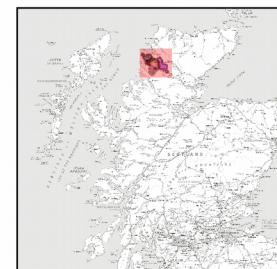
- Commons
- Resistance to neoliberalism
- Democratization
- Affective ties
- Collective enterprise

Major Estates on the Assynt Peninsula



Contains OS data © Crown copyright and database right (2019)

Estate boundaries from <http://whoonwnsscotland.org.uk/>

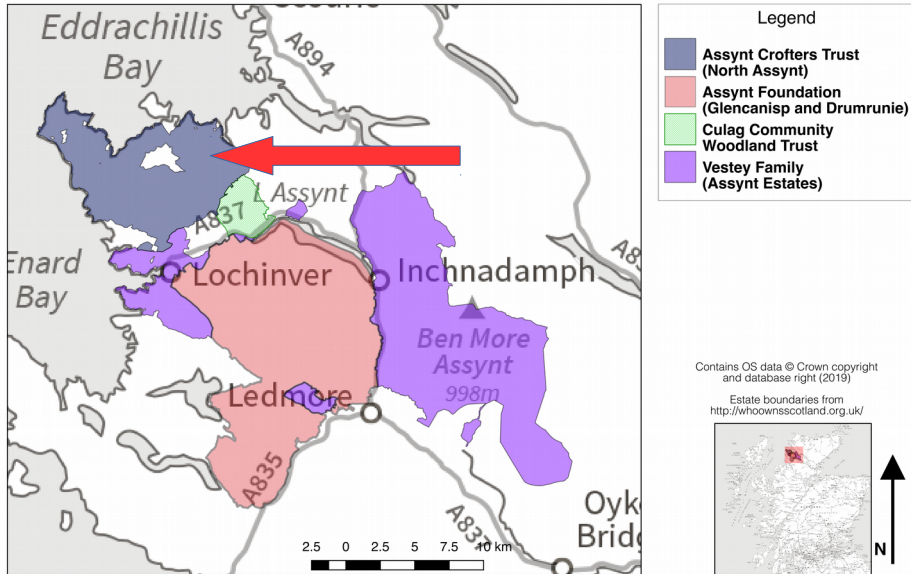


Crofting



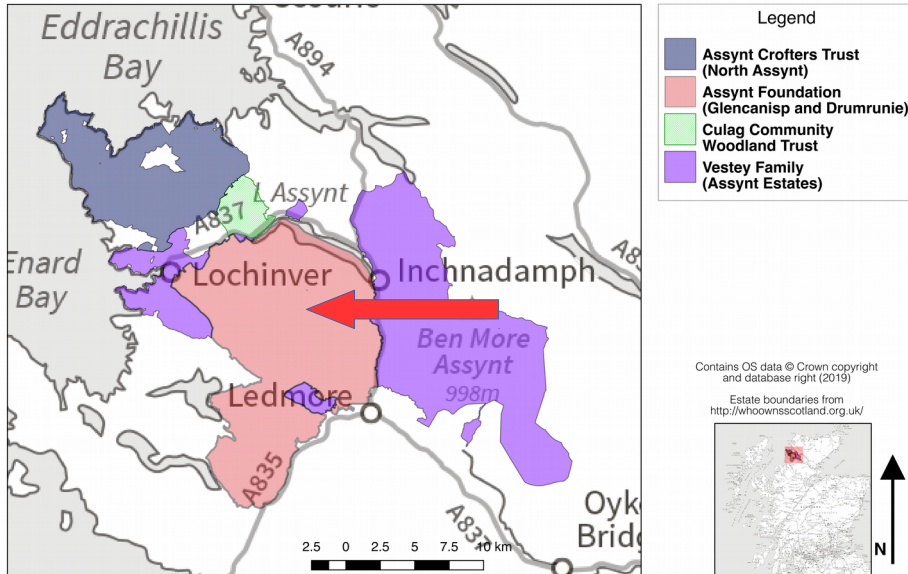
Assynt Crofters Trust

Major Estates on the Assynt Peninsula



Assynt Foundation

Major Estates on the Assynt Peninsula



Technics of Community Enterprise

Binding Commons

- Places, buildings, material actors
- Importance, affective association
- Mediate human society
- Whom or what is cared for?

Labor of Enterprise

- Who performs it?
- Who has decision-making agency?
- What goals are agreed upon?
- How are disputes resolved?
- How are external actors involved/assembled?

Technics - Private Ownership

Binding Commons

- Holiday lodges, rarely occupied
- Fishing, hunting
- Relationship of either neglect or paternalism, sometimes both
- Anachronistic presentation
- Maintain local labor force

Labor of Enterprise

- Most rural private estates lose money
- Require external funding
- Office of the "factor": charter surveyor
- "properly"

Technics - Crofters Trust

Binding Commons

- Small stores
- Community hall
- Post offices
- NHS office
- Animals
- Hydroelectric facility
- Ruined church

Labor of Enterprise

- Only crofters decide
- Suspicion to external actors
- Older, predominantly male
Assynt natives
- Narrow goals of maintaining
land, solvency
- Small affordable housing,
lack of demand

Technics - Foundation

Binding Commons

- Mountains, beaches, flowers
- Fishing, hunting
- Tourism-focused lodge
- Art-oriented projects
- Vegetable gardens
- "Hutting"
- Store, P.O., visitor center in Lochinver

Labor of Enterprise

- Board with very high turnover, many retirees
- Lodge managers
- Coordinate stalking
- New Executive Officer, rural charter surveyor
- Correct prior efforts ("properly")

Differing Problems

Crofters Trust

- Excessive closure
- Technical system is stable, but inflexible
- Tight coupling of humans to non-human commons
- Relations with external actors has been problematic

Foundation

- Insufficient closure
- Technical system is too flexible, lacks focus
- Humans are loosely coupled to non-human commons
- Excessive reliance on external actors, funding

Conclusions

- Community ownership is still powerful!
- Closure via tight affective ties
- Possibility for alternative technics relies on this
- Without alternative technics, retreat to conventional technics

Coda

DCT Passport

Friday, April 5th 2019

Shop Buy a photo Jobs Energy Cars Reader Travel Family Announcements Dating

The Press and Journal

Start typing

Home News Sport Business Lifestyle Video **Subscribe** Offers All Sections

Brexit Local Politics Farming Energy Jobs Supplements Competitions

NEWS / HIGHLANDS

Estates help from Danish billionaire to protect land in Sutherland



by Rita Campbell

March 11, 2019, 7:47 am



© Supplied

Wildland Limited has given a loan to the Assynt Foundation to help Sutherland estates.

FIND YOUR NEXT JOB WITH **HIJOBS**

DYW West Highland Programme
Director - Lochaber Chamber of

Privacy settings